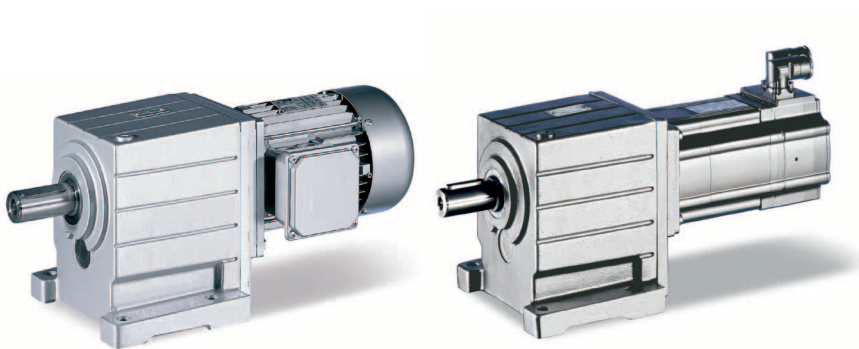


Robust and precise in application.



The robust helical gearboxes excel through their high permissible radial forces, finely graduated speed-reduction ratios and low backlash.

They are available in 1-stage, 2-stage and 3-stage versions with torque of to 5,920 Nm and a ratio of up to $i=435$.

Models

- 1-stage, 2-stage and 3-stage gearboxes
- Solid shaft with keyway
- Foot or flange mounting

Technical data

Gearbox size		GST03	GST04	GST05	GST06	GST07	GST09	GST11	GST14
Max. torque	[Nm]	45	73	172	375	710	1623	2848	5920
Ratio range		2.6 - 59	1.6 - 45	1.6 - 335	2 - 435	2 - 417	2 - 412	4 - 412	4 - 412
Dimensions									
Solid shaft	[mm]	14 x 28 20 x 40	16 x 32 20 x 40	20 x 40 25 x 50	25 x 50 30 x 60	30 x 60 40 x 80	40 x 80 50 x 100	60 x 120	80 x 160
Flange	[mm]	120 140 160	120 140 160	120 140 160 200	160 200	200 250	250 300	300 350	350 400

GST helical geared motors

Gearboxes

When combined with three-phase AC motors and servo motors, our helical gearboxes form a compact yet powerful drive unit. Numerous drive-end and output-end options allow precise matching of the drive to your specific application.

Models

- With three-phase AC motors in line with the ErP Directive in the power range from 0.06 to 45 kW
- With servo motors in the power range from 0.25 to 20.3 kW
- As a Drive Package with the decentralised Inverter Drives 8400 motec, covering the power range up to 7.5 kW.

Matched to your environmental conditions

Gearboxes with	Three-phase AC motors	Servo motors
Degree of protection		
EN 60529	IP55	IP54 / IP65
Approvals	cURus, GOST-R, CCC and UkrSepro	
Climatic conditions		
Storage temperature	-30°C to +60°C	
Operating temperature	-20°C to +40°C	
Surface and corrosion protection		
OKS-G (primed)	1K primer coat	
OKS-S (small)	2K-PUR top coat	
OKS-M (medium)	1K primer coat 2K-PUR top coat	
OKS-L (large)	2K-EP primer coat 2K-PUR top coat	